



ENERGY STATEMENT

www.pge.com/MyEnergy

Account No: 6740236599-2
Statement Date: 09/01/2021
Due Date: 09/20/2021

Service For:

LAKE CANYON COMMUNITY SVCS
DISTRICT
C/O OPERATIONS MANAGER
Please see details page.

Questions about your bill?

Business Specialist available:
Mon-Fri: 7am to 6pm
1-800-468-4743
www.pge.com/MyEnergy

Ways To Pay

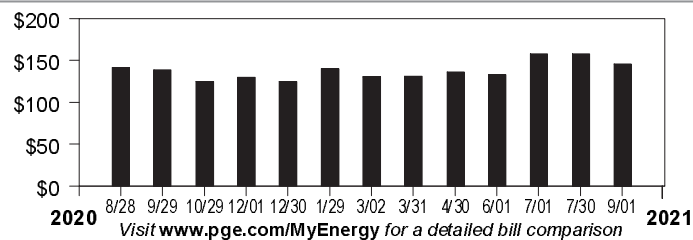
www.pge.com/waystopay

Your Account Summary

Amount Due on Previous Statement	\$158.61
Payment(s) Received Since Last Statement	-158.61
Previous Unpaid Balance	\$0.00
Current PG&E Electric Delivery Charges	\$120.02
Silicon Valley Clean Energy Electric Generation Charges	25.88

Total Amount Due by 09/20/2021 \$145.90

Electric Monthly Billing History



Please return this portion with your payment. No staples or paper clips. Do not fold. Thank you.

99906740236599200000145900000014590



Account Number: 6740236599-2 Due Date: 09/20/2021 Total Amount Due: \$145.90

Amount Enclosed:

\$

LAKE CANYON COMMUNITY SVCS DISTRICT
C/O OPERATIONS MANAGER
PO BOX 866
LOS GATOS, CA 95031-0866

PG&E
BOX 997300
SACRAMENTO, CA 95899-7300



ENERGY STATEMENT

www.pge.com/MyEnergy

Account No: 6740236599-2
Statement Date: 09/01/2021
Due Date: 09/20/2021

Important Phone Numbers - Monday-Friday 7 a.m.-9 p.m., Saturday 8 a.m.-6 p.m.

Customer Service (All Languages; Relay Calls Accepted) 1-800-743-5000

TTY 7-1-1

Servicio al Cliente en Español (Spanish) 1-800-660-6789
華語客戶服務 (Chinese) 1-800-893-9555

Dịch vụ khách tiếng Việt (Vietnamese) 1-800-298-8438
Business Customer Service 1-800-468-4743

Rules and rates

You may be eligible for a lower rate. Find out about optional rates or view a complete list of rules and rates, visit www.pge.com or call 1-800-743-5000.

If you believe there is an error on your bill, please call 1-800-743-5000 to speak with a representative. If you are not satisfied with our response, contact the California Public Utilities Commission (CPUC), Consumer Affairs Branch (CAB), 505 Van Ness Avenue, Room 2003, San Francisco, CA 94102, 1-800-649-7570 or 7-1-1 (8:30 AM to 4:30 PM, Monday through Friday) or by visiting www.cpuc.ca.gov/complaints/.

To avoid having service turned off while you wait for the outcome of a complaint to the CPUC specifically regarding the accuracy of your bill, please contact CAB for assistance. If your case meets the eligibility criteria, CAB will provide you with instructions on how to mail a check or money order to be impounded pending resolution of your case. You must continue to pay your current charges while your complaint is under review to keep your service turned on.

If you are not able to pay your bill, call PG&E to discuss how we can help. You may qualify for reduced rates under PG&E's CARE program or other special programs and agencies may be available to assist you. You may qualify for PG&E's Energy Savings Assistance Program which is an energy efficiency program for income-qualified residential customers.

Important definitions

Rotating outage blocks are subject to change without advance notice due to operational conditions.

Demand charge: Many non-residential rates include a demand charge. Demand is a measurement of the highest usage of electricity in any single fifteen (or sometimes five) minute period during a monthly billing cycle. Demand is measured in kilowatts (or kW). High demand is usually associated with equipment start-up. By spreading equipment start-ups over a longer period of time, you may be able to lower demand and reduce your demand charges.

Time-of-use electric prices are higher every day during afternoons and evenings, and lower at other times of the day. Prices also change by season, with higher prices in the summer and lower prices in the winter.

Wildfire Fund Charge: Charge on behalf of the State of California Department of Water Resources (DWR) to fund the California Wildfire Fund. For usage prior to October 1, 2020, this charge included costs related to the 2001 California energy crisis, also collected on behalf of the DWR. These charges belong to DWR, not PG&E.

Power Charge Indifference Adjustment (PCIA): Ensures that non-exempt customers under PG&E's GT and ECR rate schedules or who purchase electricity (generation) from non-PG&E suppliers pay their share of generation costs.

Gas Public Purpose Program (PPP) Surcharge. Used to fund state-mandated gas assistance programs for low-income customers, energy efficiency programs, and public-interest research and development.

Visit www.pge.com/billexplanation for more definitions. To view most recent bill inserts including legal or mandated notices, visit www.pge.com/billinserts.

Your Electric Charges Breakdown

Transmission	\$8.68
Distribution	87.81
Electric Public Purpose Programs	5.48
Nuclear Decommissioning	0.30
Wildfire Fund Charge	1.97
Competition Transition Charges (CTC)	0.01
Energy Cost Recovery Amount	0.10
PCIA	15.67
Total Electric Charges	\$120.02

"PG&E" refers to Pacific Gas and Electric Company, a subsidiary of PG&E Corporation. © 2021 Pacific Gas and Electric Company. All rights reserved.

Please do not mark in box. For system use only.

Update My Information (English Only)

Please allow 1-2 billing cycles for changes to take effect

Account Number: 6740236599-2

Change my mailing address to: _____

City _____ State _____ ZIP code _____

Primary Phone # _____ Primary Email _____

Ways To Pay

- **Online via web or mobile at www.pge.com/waystopay**
- **By mail:** Send your payment along with this payment stub in the envelope provided.
- **By debit card, Visa, MasterCard, American Express, or Discover:** Call 877-704-8470 at any time. (Our independent service provider charges a fee per transaction.)
- **At a PG&E payment center or local office:** To find a payment center or local office near you, please visit www.pge.com or call 800-743-5000. Please bring a copy of your bill with you.



ENERGY STATEMENT

www.pge.com/MyEnergy

Account No: 6740236599-2
Statement Date: 09/01/2021
Due Date: 09/20/2021

Summary of your energy related services

	Meter Number	Usage	Amount
Service For: 19141 BEARDSLEY RD			
Service Agreement ID: 6740236617 SEWER LIFT STA			
PG&E Electric Delivery Charges	1007138367	249.835600 kWh	\$61.91
Service Agreement ID: 6748703047			
SILICON VALLEY CLEAN ENERGY Electric		249.835700 kWh	\$19.14
Generation Charges			
Total			\$81.05
Service For: 19211 BEARDSLEY RD # B			
Service Agreement ID: 6740236891			
PG&E Electric Delivery Charges	1009128853	1.655700 kWh	\$10.18
Service Agreement ID: 6745318721			
SILICON VALLEY CLEAN ENERGY Electric		1.655700 kWh	\$0.17
Generation Charges			
Total			\$10.35
Service For: 19471 MADRONE CT # B			
Service Agreement ID: 6740236963			
PG&E Electric Delivery Charges	1009659436	9.541000 kWh	\$11.82
Service Agreement ID: 6746385295			
SILICON VALLEY CLEAN ENERGY Electric		9.541000 kWh	\$0.74
Generation Charges			
Total			\$12.56
Service For: 19032 OAK CT # B			
Service Agreement ID: 6740236856			
PG&E Electric Delivery Charges	1010575850	70.343000 kWh	\$24.48
Service Agreement ID: 6743635267			
SILICON VALLEY CLEAN ENERGY Electric		70.343000 kWh	\$5.15
Generation Charges			
Total			\$29.63
Service For: 19120 LAUREL DR # B			
Service Agreement ID: 6740236931			
PG&E Electric Delivery Charges	1009128437	8.675600 kWh	\$11.63
Service Agreement ID: 6745581850			
SILICON VALLEY CLEAN ENERGY Electric		8.675600 kWh	\$0.68
Generation Charges			
Total			\$12.31



ENERGY STATEMENT

www.pge.com/MyEnergy

Account No: 6740236599-2
Statement Date: 09/01/2021
Due Date: 09/20/2021

Details of PG&E Electric Delivery Charges

07/26/2021 - 08/24/2021 (30 billing days)

Service For: 19141 BEARDSLEY RD

Service Agreement ID: 6740236617 SEWER LIFT STA

Rate Schedule: B1 Bus Low Use

07/26/2021 – 07/31/2021

Customer Charge	6 days @ \$0.32854	\$1.97
Energy Charges		
Peak	13.658200 kWh @ \$0.33337	4.55
Part Peak	8.773300 kWh @ \$0.28414	2.49
Off Peak	29.673300 kWh @ \$0.26333	7.81
Generation Credit		-6.46
Power Charge Indifference Adjustment		2.40

08/01/2021 – 08/24/2021

Customer Charge	24 days @ \$0.32854	\$7.88
Energy Charges		
Peak	50.940360 kWh @ \$0.33479	17.05
Part Peak	38.103190 kWh @ \$0.28556	10.88
Off Peak	108.687250 kWh @ \$0.26475	28.77
Generation Credit		-24.55
Power Charge Indifference Adjustment		9.12

Total PG&E Electric Delivery Charges \$61.91

2016 Vintaged Power Charge Indifference Adjustment

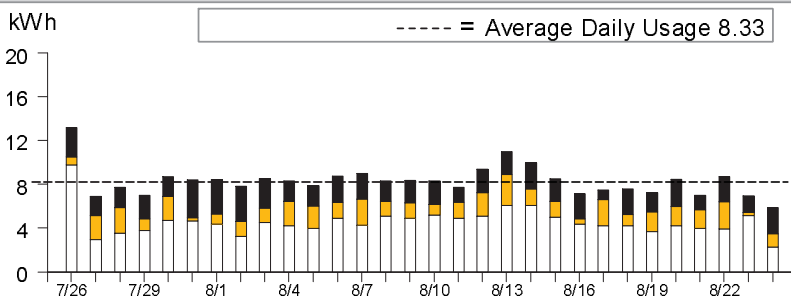
Average Daily Usage (kWh / day)

Last Year	Last Period	Current Period
9.38	8.31	8.33

Service Information

Meter #	1007138367
Total Usage	249.835600 kWh
Serial	B
Rotating Outage Block	50

Electric Usage This Period: 249.835600 kWh, 30 billing days



	Usage	Energy Charges
 Peak¹	25.85%	\$21.60
 Part Peak²	18.77%	\$13.37
 Off Peak³	55.38%	\$36.58
 Super Off Peak⁴	0.00%	\$0.00

¹**Peak:** Year-round, Daily, 4:00pm-9:00pm

²**Part Peak:** Summer, 6/1-9/30, Daily, 2:00pm-4:00pm and 9:00pm-11:00pm

³**Off Peak:** Summer, 6/1-9/30, Daily, 11:00pm-2:00pm

Winter, 10/1-2/28, Daily, 9:00pm-4:00pm

Winter, 3/1-5/31, Daily, 9:00pm-9:00am and 2:00pm-4:00pm

⁴**Super Off Peak:** Winter, Daily, 3/1-5/31, 9:00am-2:00pm



ENERGY STATEMENT

www.pge.com/MyEnergy

Account No: 6740236599-2
Statement Date: 09/01/2021
Due Date: 09/20/2021

Details of Silicon Valley Clean Energy Electric Generation Charges

07/26/2021 - 08/24/2021 (30 billing days)

Service For: 19141 BEARDSLEY RD

Service Agreement ID: 6748703047 ESP Customer Number: 6740236617

07/26/2021 – 08/24/2021

Rate Schedule: B-1

Generation - Off Peak - Summer	138.360600 kWh @ \$0.05455	\$7.55
Generation - Part Peak - Summer	46.876500 kWh @ \$0.07515	3.52
Generation - On Peak - Summer	64.598600 kWh @ \$0.12389	8.00
Net Charges		19.07

Energy Commission Surcharge 0.07

Customers receive clean electricity and save money with SVCE. Please see updated SVCE electric rates and comparisons to PG&E at www.svcleanenergy.org/rates
For current customer programs, visit www.svcleanenergy.org/programs

Total Silicon Valley Clean Energy Electric Generation Charges

\$19.14

For questions regarding charges on this page, please contact:

SILICON VALLEY CLEAN ENERGY
1-844-474-7823
customerservice@SVCleanEnergy.org

Additional Messages

About Silicon Valley Clean Energy (SVCE)
Serving 13 Santa Clara County communities, SVCE is a locally-controlled, public agency providing residents and businesses with electricity from renewable and hydroelectric sources.

Understanding SVCE Charges

PG&E continues to provide and bill for electric delivery. SVCE replaces PG&E generation charges. Under PG&E Electric Delivery Charges, note the Generation Credit. This is what PG&E would have charged for power, and now credits back to you. The Power Charge Indifference Adjustment and Franchise Fee are factored into SVCE rates. Learn more: <https://www.svcleanenergy.org/your-bill/>.

SVCE is committed to protecting customer privacy. Learn about our privacy policy at www.svcleanenergy.org/customer-confidentiality



ENERGY STATEMENT

www.pge.com/MyEnergy

Account No: 6740236599-2
Statement Date: 09/01/2021
Due Date: 09/20/2021

Details of PG&E Electric Delivery Charges

07/26/2021 - 08/24/2021 (30 billing days)

Service For: 19211 BEARDSLEY RD # B

Service Agreement ID: 6740236891

Rate Schedule: B1 Bus Low Use

07/26/2021 – 07/31/2021

Customer Charge	6 days @ \$0.32854	\$1.97
Energy Charges		
Peak	0.490800 kWh @ \$0.33337	0.16
Generation Credit		-0.09
Power Charge Indifference Adjustment		0.02

08/01/2021 – 08/24/2021

Customer Charge	24 days @ \$0.32854	\$7.88
Energy Charges		
Peak	0.450000 kWh @ \$0.33479	0.15
Part Peak	0.248000 kWh @ \$0.28556	0.07
Off Peak	0.466900 kWh @ \$0.26475	0.12
Generation Credit		-0.15
Power Charge Indifference Adjustment		0.05

Total PG&E Electric Delivery Charges \$10.18

2016 Vintaged Power Charge Indifference Adjustment

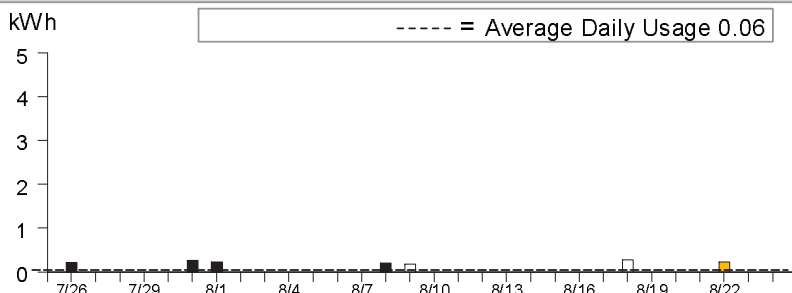
Average Daily Usage (kWh / day)

Last Year	Last Period	Current Period
0.04	0.09	0.06

Service Information

Meter #	1009128853
Total Usage	1.655700 kWh
Serial	B
Rotating Outage Block	50

Electric Usage This Period: 1.655700 kWh, 30 billing days



	Usage	Energy Charges
■ Peak¹	56.82%	\$0.31
■ Part Peak²	14.99%	\$0.07
■ Off Peak³	28.19%	\$0.12
■ Super Off Peak⁴	0.00%	\$0.00

¹**Peak:** Year-round, Daily, 4:00pm-9:00pm

²**Part Peak:** Summer, 6/1-9/30, Daily, 2:00pm-4:00pm and 9:00pm-11:00pm

³**Off Peak:** Summer, 6/1-9/30, Daily, 11:00pm-2:00pm

Winter, 10/1-2/28, Daily, 9:00pm-4:00pm

Winter, 3/1-5/31, Daily, 9:00pm-9:00am and 2:00pm-4:00pm

⁴**Super Off Peak:** Winter, Daily, 3/1-5/31, 9:00am-2:00pm



ENERGY STATEMENT

www.pge.com/MyEnergy

Account No: 6740236599-2
Statement Date: 09/01/2021
Due Date: 09/20/2021

Details of Silicon Valley Clean Energy Electric Generation Charges

07/26/2021 - 08/24/2021 (30 billing days)

Service For: 19211 BEARDSLEY RD # B

Service Agreement ID: 6745318721 ESP Customer Number: 6740236891

07/26/2021 – 08/24/2021

Rate Schedule: B-1

Generation - Off Peak - Summer	0.466900 kWh @ \$0.05455	\$0.03
Generation - Part Peak - Summer	0.248000 kWh @ \$0.07515	0.02
Generation - On Peak - Summer	0.940800 kWh @ \$0.12389	0.12
	Net Charges	0.17

Energy Commission Surcharge 0.00

Customers receive clean electricity and save money with SVCE. Please see updated

SVCE electric rates and comparisons to PG&E at www.svcleanenergy.org/rates

For current customer programs, visit www.svcleanenergy.org/programs

**Total Silicon Valley Clean Energy
Electric Generation Charges**

\$0.17

For questions regarding charges on this page, please contact:

SILICON VALLEY CLEAN ENERGY

1-844-474-7823

customerservice@SVCleanEnergy.org

Additional Messages

About Silicon Valley Clean Energy (SVCE)

Serving 13 Santa Clara County communities, SVCE is a locally-controlled, public agency providing residents and businesses with electricity from renewable and hydroelectric sources.

Understanding SVCE Charges

PG&E continues to provide and bill for electric delivery. SVCE replaces PG&E generation charges. Under PG&E Electric Delivery Charges, note the Generation Credit. This is what PG&E would have charged for power, and now credits back to you. The Power Charge Indifference Adjustment and Franchise Fee are factored into SVCE rates. Learn more:

<https://www.svcleanenergy.org/your-bill/>

SVCE is committed to protecting customer privacy.

Learn about our privacy policy at

www.svcleanenergy.org/customer-confidentiality



ENERGY STATEMENT

www.pge.com/MyEnergy

Account No: 6740236599-2
Statement Date: 09/01/2021
Due Date: 09/20/2021

Details of PG&E Electric Delivery Charges

07/26/2021 - 08/24/2021 (30 billing days)

Service For: 19471 MADRONE CT # B

Service Agreement ID: 6740236963

Rate Schedule: B1 Bus Low Use

07/26/2021 – 07/31/2021

Customer Charge	6 days @ \$0.32854	\$1.97
Energy Charges		
Peak	0.379200 kWh @ \$0.33337	0.13
Part Peak	0.465300 kWh @ \$0.28414	0.13
Off Peak	0.534100 kWh @ \$0.26333	0.14
Generation Credit		-0.18
Power Charge Indifference Adjustment		0.06

08/01/2021 – 08/24/2021

Customer Charge	24 days @ \$0.32854	\$7.88
Energy Charges		
Peak	2.212220 kWh @ \$0.33479	0.74
Part Peak	1.499110 kWh @ \$0.28556	0.43
Off Peak	4.451070 kWh @ \$0.26475	1.18
Generation Credit		-1.04
Power Charge Indifference Adjustment		0.38

Total PG&E Electric Delivery Charges \$11.82

2016 Vintaged Power Charge Indifference Adjustment

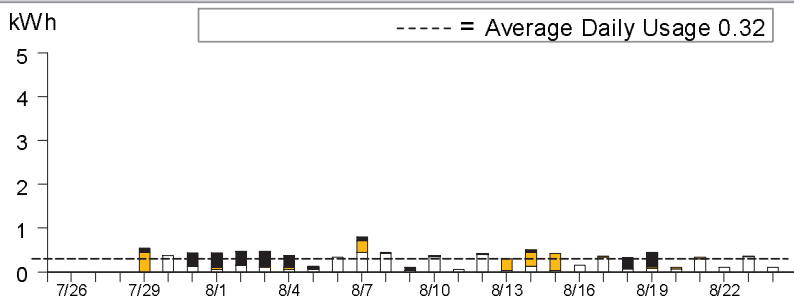
Average Daily Usage (kWh / day)

Last Year	Last Period	Current Period
0.38	0.19	0.32

Service Information

Meter #	1009659436
Total Usage	9.541000 kWh
Serial	B
Rotating Outage Block	50

Electric Usage This Period: 9.541000 kWh, 30 billing days



	Usage	Energy Charges
 Peak¹	27.16%	\$0.87
 Part Peak²	20.60%	\$0.56
 Off Peak³	52.24%	\$1.32
 Super Off Peak⁴	0.00%	\$0.00

¹**Peak:** Year-round, Daily, 4:00pm-9:00pm

²**Part Peak:** Summer, 6/1-9/30, Daily, 2:00pm-4:00pm and 9:00pm-11:00pm

³**Off Peak:** Summer, 6/1-9/30, Daily, 11:00pm-2:00pm

Winter, 10/1-2/28, Daily, 9:00pm-4:00pm

Winter, 3/1-5/31, Daily, 9:00pm-9:00am and 2:00pm-4:00pm

⁴**Super Off Peak:** Winter, Daily, 3/1-5/31, 9:00am-2:00pm



ENERGY STATEMENT

www.pge.com/MyEnergy

Account No: 6740236599-2
Statement Date: 09/01/2021
Due Date: 09/20/2021

Details of Silicon Valley Clean Energy Electric Generation Charges

07/26/2021 - 08/24/2021 (30 billing days)

Service For: 19471 MADRONE CT # B

Service Agreement ID: 6746385295 ESP Customer Number: 6740236963

07/26/2021 – 08/24/2021

Rate Schedule: B-1

Generation - Off Peak - Summer	4.985200 kWh @ \$0.05455	\$0.27
Generation - Part Peak - Summer	1.964400 kWh @ \$0.07515	0.15
Generation - On Peak - Summer	2.591400 kWh @ \$0.12389	0.32
	Net Charges	0.74

Energy Commission Surcharge 0.00

Customers receive clean electricity and save money with SVCE. Please see updated SVCE electric rates and comparisons to PG&E at www.svcleanenergy.org/rates

For current customer programs, visit www.svcleanenergy.org/programs

**Total Silicon Valley Clean Energy
Electric Generation Charges**

\$0.74

For questions regarding charges on this page, please contact:

SILICON VALLEY CLEAN ENERGY

1-844-474-7823

customerservice@SVCleanEnergy.org

Additional Messages

About Silicon Valley Clean Energy (SVCE)

Serving 13 Santa Clara County communities, SVCE is a locally-controlled, public agency providing residents and businesses with electricity from renewable and hydroelectric sources.

Understanding SVCE Charges

PG&E continues to provide and bill for electric delivery. SVCE replaces PG&E generation charges. Under PG&E Electric Delivery Charges, note the Generation Credit. This is what PG&E would have charged for power, and now credits back to you. The Power Charge Indifference Adjustment and Franchise Fee are factored into SVCE rates. Learn more:

<https://www.svcleanenergy.org/your-bill/>

SVCE is committed to protecting customer privacy.

Learn about our privacy policy at

www.svcleanenergy.org/customer-confidentiality



ENERGY STATEMENT

www.pge.com/MyEnergy

Account No: 6740236599-2
Statement Date: 09/01/2021
Due Date: 09/20/2021

Details of PG&E Electric Delivery Charges

07/26/2021 - 08/24/2021 (30 billing days)

Service For: 19032 OAK CT # B
Service Agreement ID: 6740236856
Rate Schedule: B1 Bus Low Use

07/26/2021 – 07/31/2021

Customer Charge	6 days @ \$0.32854	\$1.97
Energy Charges		
Peak	1.157000 kWh @ \$0.33337	0.39
Part Peak	3.104000 kWh @ \$0.28414	0.88
Off Peak	3.406000 kWh @ \$0.26333	0.90
Generation Credit		-0.96
Power Charge Indifference Adjustment		0.35

08/01/2021 – 08/24/2021

Customer Charge	24 days @ \$0.32854	\$7.88
Energy Charges		
Peak	14.138400 kWh @ \$0.33479	4.73
Part Peak	8.367240 kWh @ \$0.28556	2.39
Off Peak	40.170360 kWh @ \$0.26475	10.64
Generation Credit		-7.58
Power Charge Indifference Adjustment		2.89

Total PG&E Electric Delivery Charges \$24.48

2016 Vintaged Power Charge Indifference Adjustment

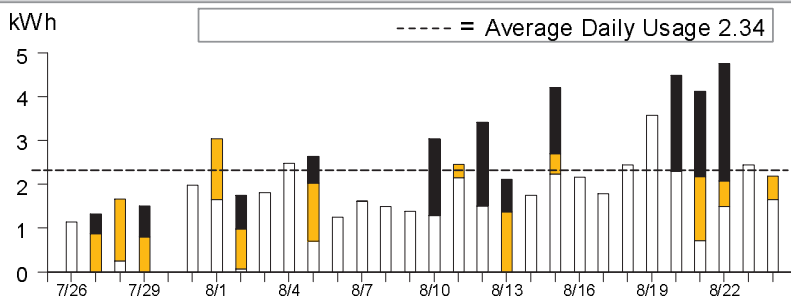
Average Daily Usage (kWh / day)

Last Year	Last Period	Current Period
0.75	2.84	2.34

Service Information

Meter #	1010575850
Total Usage	70.343000 kWh
Serial	B
Rotating Outage Block	50

Electric Usage This Period: 70.343000 kWh, 30 billing days



	Usage	Energy Charges
 Peak¹	21.74%	\$5.12
 Part Peak²	16.32%	\$3.27
 Off Peak³	61.94%	\$11.54
 Super Off Peak⁴	0.00%	\$0.00

¹**Peak:** Year-round, Daily, 4:00pm-9:00pm

²**Part Peak:** Summer, 6/1-9/30, Daily, 2:00pm-4:00pm and 9:00pm-11:00pm

³**Off Peak:** Summer, 6/1-9/30, Daily, 11:00pm-2:00pm
Winter, 10/1-2/28, Daily, 9:00pm-4:00pm

Winter, 3/1-5/31, Daily, 9:00pm-9:00am and 2:00pm-4:00pm

⁴**Super Off Peak:** Winter, Daily, 3/1-5/31, 9:00am-2:00pm



ENERGY STATEMENT

www.pge.com/MyEnergy

Account No: 6740236599-2
Statement Date: 09/01/2021
Due Date: 09/20/2021

Details of Silicon Valley Clean Energy Electric Generation Charges

07/26/2021 - 08/24/2021 (30 billing days)

Service For: 19032 OAK CT # B

Service Agreement ID: 6743635267 ESP Customer Number: 6740236856

07/26/2021 – 08/24/2021

Rate Schedule: B-1

Generation - Off Peak - Summer	43.576400 kWh @ \$0.05455	\$2.38
Generation - Part Peak - Summer	11.471200 kWh @ \$0.07515	0.86
Generation - On Peak - Summer	15.295400 kWh @ \$0.12389	1.89
	Net Charges 5.13	

Energy Commission Surcharge 0.02

Customers receive clean electricity and save money with SVCE. Please see updated

SVCE electric rates and comparisons to PG&E at www.svcleanenergy.org/rates

For current customer programs, visit www.svcleanenergy.org/programs

Total Silicon Valley Clean Energy Electric Generation Charges

\$5.15

For questions regarding charges on this page, please contact:

SILICON VALLEY CLEAN ENERGY

1-844-474-7823

customerservice@SVCleanEnergy.org

Additional Messages

About Silicon Valley Clean Energy (SVCE)

Serving 13 Santa Clara County communities, SVCE is a locally-controlled, public agency providing residents and businesses with electricity from renewable and hydroelectric sources.

Understanding SVCE Charges

PG&E continues to provide and bill for electric delivery. SVCE replaces PG&E generation charges. Under PG&E Electric Delivery Charges, note the Generation Credit. This is what PG&E would have charged for power, and now credits back to you. The Power Charge Indifference Adjustment and Franchise Fee are factored into SVCE rates. Learn more:

<https://www.svcleanenergy.org/your-bill/>

SVCE is committed to protecting customer privacy.

Learn about our privacy policy at

www.svcleanenergy.org/customer-confidentiality



ENERGY STATEMENT

www.pge.com/MyEnergy

Account No: 6740236599-2
Statement Date: 09/01/2021
Due Date: 09/20/2021

Details of PG&E Electric Delivery Charges

07/26/2021 - 08/24/2021 (30 billing days)

Service For: 19120 LAUREL DR # B

Service Agreement ID: 6740236931

Rate Schedule: B1 Bus Low Use

07/26/2021 – 07/31/2021

Customer Charge	6 days @ \$0.32854	\$1.97
Energy Charges		
Peak	0.366300 kWh @ \$0.33337	0.12
Part Peak	0.158700 kWh @ \$0.28414	0.05
Off Peak	0.807500 kWh @ \$0.26333	0.21
Generation Credit		-0.17
Power Charge Indifference Adjustment		0.06

08/01/2021 – 08/24/2021

Customer Charge	24 days @ \$0.32854	\$7.88
Energy Charges		
Peak	2.279500 kWh @ \$0.33479	0.76
Part Peak	1.029600 kWh @ \$0.28556	0.29
Off Peak	4.034000 kWh @ \$0.26475	1.07
Generation Credit		-0.95
Power Charge Indifference Adjustment		0.34

Total PG&E Electric Delivery Charges \$11.63

2016 Vintaged Power Charge Indifference Adjustment

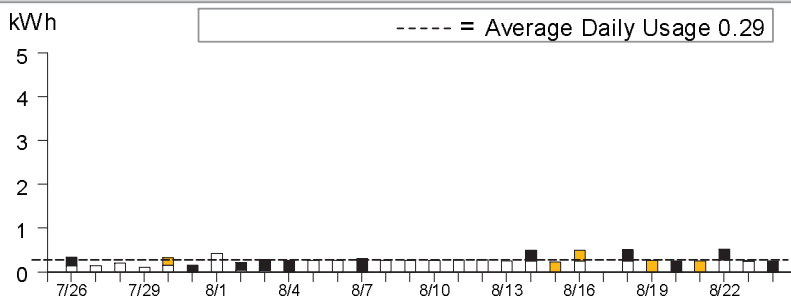
Average Daily Usage (kWh / day)

Last Year	Last Period	Current Period
0.32	0.32	0.29

Service Information

Meter #	1009128437
Total Usage	8.675600 kWh
Serial	B
Rotating Outage Block	50

Electric Usage This Period: 8.675600 kWh, 30 billing days



	Usage	Energy Charges
 Peak¹	30.49%	\$0.88
 Part Peak²	13.71%	\$0.34
 Off Peak³	55.80%	\$1.28
 Super Off Peak⁴	0.00%	\$0.00

¹**Peak:** Year-round, Daily, 4:00pm-9:00pm

²**Part Peak:** Summer, 6/1-9/30, Daily, 2:00pm-4:00pm and 9:00pm-11:00pm

³**Off Peak:** Summer, 6/1-9/30, Daily, 11:00pm-2:00pm

Winter, 10/1-2/28, Daily, 9:00pm-4:00pm

Winter, 3/1-5/31, Daily, 9:00pm-9:00am and 2:00pm-4:00pm

⁴**Super Off Peak:** Winter, Daily, 3/1-5/31, 9:00am-2:00pm



ENERGY STATEMENT

www.pge.com/MyEnergy

Account No: 6740236599-2
Statement Date: 09/01/2021
Due Date: 09/20/2021

Details of Silicon Valley Clean Energy Electric Generation Charges

07/26/2021 - 08/24/2021 (30 billing days)

Service For: 19120 LAUREL DR # B

Service Agreement ID: 6745581850 ESP Customer Number: 6740236931

07/26/2021 – 08/24/2021

Rate Schedule: B-1

Generation - Off Peak - Summer	4.841500 kWh @ \$0.05455	\$0.26
Generation - Part Peak - Summer	1.188300 kWh @ \$0.07515	0.09
Generation - On Peak - Summer	2.645800 kWh @ \$0.12389	0.33
	Net Charges	0.68

Energy Commission Surcharge 0.00

Customers receive clean electricity and save money with SVCE. Please see updated

SVCE electric rates and comparisons to PG&E at www.svcleanenergy.org/rates

For current customer programs, visit www.svcleanenergy.org/programs

**Total Silicon Valley Clean Energy
Electric Generation Charges**

\$0.68

For questions regarding charges on this page, please contact:

SILICON VALLEY CLEAN ENERGY

1-844-474-7823

customerservice@SVCleanEnergy.org

Additional Messages

About Silicon Valley Clean Energy (SVCE)

Serving 13 Santa Clara County communities, SVCE is a locally-controlled, public agency providing residents and businesses with electricity from renewable and hydroelectric sources.

Understanding SVCE Charges

PG&E continues to provide and bill for electric delivery. SVCE replaces PG&E generation charges. Under PG&E Electric Delivery Charges, note the Generation Credit. This is what PG&E would have charged for power, and now credits back to you. The Power Charge Indifference Adjustment and Franchise Fee are factored into SVCE rates. Learn more:

<https://www.svcleanenergy.org/your-bill/>

SVCE is committed to protecting customer privacy.

Learn about our privacy policy at

www.svcleanenergy.org/customer-confidentiality

